



UEBT
SOURCING[®]
WITH RESPECT

BECOME A UEFT MEMBER

SHOW YOUR COMMITMENT
TO SOURCING WITH RESPECT

“ TODAY WE ARE AT A TURNING POINT IN TACKLING BIODIVERSITY, SO WE BECAME A UEBT MEMBER. IT HAS REALLY HELPED US DEFINE A CLEAR VISION AND DRIVE OUR FOCUS

Cécile Lochard Chief Sustainability Officer, Guerlain

UEBT membership is a way to show you are part of a group of companies that are committed to sourcing with respect for people and biodiversity.

UEBT members come from all levels of the supply chain, from brands to processing companies to producers.

What UEBT members all have in common is they all:

- Make five ethical sourcing commitments
- Comply with six minimum requirements applicable to their own operations

88%
List of all ingredients

58% said
'very important'

86%
Origin of ingredients

52% said
'very important'

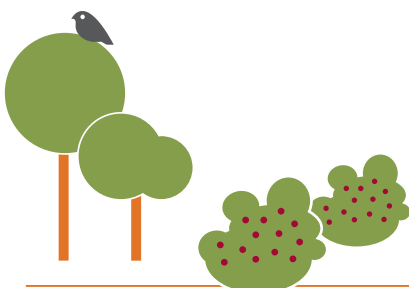
The **'most important'** pieces of product information for consumers'

86%
Impact on biodiversity

54% said
'very important'

84%
Social impact of product

47% said
'very important'



MAKE FIVE COMMITMENTS TO ETHICALLY SOURCE NATURAL RAW MATERIALS

1 Assess sourcing policies and practices

UEBT members commit to sourcing with respect for people and biodiversity. They assess their corporate policies and sourcing practices.

2 Set targets for continuous improvement

UEBT members set targets and take measures towards gradually improving their sourcing systems and practices in line with the [UEBT standard](#).

3 Manage risks for people and biodiversity

UEBT members commit to due diligence on cultivation and wild collection practices in natural raw materials (ingredients from biodiversity).

4 Promote positive impact for people and biodiversity

UEBT members commit to improving cultivation and wild collection practices in the sourcing areas of strategic ingredients from biodiversity (i.e. botanicals supply chains).

See box **UEBT's focus: botanicals** overleaf.

5 Monitoring, reporting and communication

UEBT members annually report on progress. In addition, UEBT assesses progress and discusses further possible improvements, providing options for verification and certification.



COMPLY WITH SIX MINIMUM REQUIREMENTS APPLICABLE TO THEIR OWN OPERATIONS

1 Current cultivation, wild collection or related activities **have not resulted in the conversion or deforestation of intact ecosystems**, from 1 January 2014 onwards.

Indicator 1.2.1 of the UEBT standard

2 Cultivation, wild collection and trade in such **comply with laws and regulations** implementing the Convention on International Trade in Endangered Species of Wild Fauna and Flora (CITES) and other national or local rules on rare, threatened or endangered species.

Indicator 2.1.1 of the UEBT standard

3 Cultivation and wild collection activities do not take place in **protected areas** where such activities are not allowed.

Indicator 2.1.2 of the UEBT standard

4 There is no evidence of ongoing or unresolved infringement of **human rights**

Indicator 6.1.1 of the UEBT standard

5 The **minimum age for employment** is 15 years, or higher if defined by national law

Indicator 6.2.1 of the UEBT standard

6 Wages of workers are paid at least in line with official **minimum wage** regulations, collective bargaining agreements, or other applicable official wage regulations

Indicator 6.3.1 of the UEBT standard



SCOPE OF MEMBERSHIP

UEBT works with companies of all sizes and has flexible solutions to meet the needs of companies wherever they are on their ethical sourcing journey.

To that end, membership can be designed for the entire company, or for one division/subsidiary of the company. The membership scope should refer to a specific, clearly defined, and meaningful department or other entity within the corporate structure. It cannot be limited to a specific natural raw material unless it happens to be a business unit or division in itself.

Consumers are increasingly demanding that businesses demonstrate a genuine commitment to ethical sourcing

UEBT membership is not equivalent to UEBT assurance programmes (verification and certification). Claims on membership should avoid any misconception that the companies' products/ ingredients used in the products are verified or certified by UEBT, or are in compliance with the UEBT standard.

The process in a nutshell

Companies apply for membership and commit to the UEBT membership conditions and obligations. They also undergo a check of the six minimum requirements from the UEBT standard. Once UEBT confirms minimum requirements are met, they become provisional members.

The next step is that companies submit information about their processes and systems on due diligence, access and benefit sharing (ABS) and managing risks in their natural raw material supply chains. Companies receive recommendations for improvement, upon which they then must create a workplan.

UEBT's focus: botanicals

UEBT defines botanicals broadly, including plants and other unique raw materials derived from biodiversity.

For UEBT, the term covers plant parts – such as roots, flowers, fruits – or other material or compounds from animals, fungi, or microbial organisms. These ingredients may be used as herbs and spices or in compositions and ingredients used for medicinal, flavor, fragrance, dietary, cosmetic, or other purposes.

We distinguish botanicals from commodities, which also derive from nature but are grown and traded in large scale, often interchangeably.

“ AS A UEBT MEMBER, WE NOW HAVE AN INTEGRATED BIODIVERSITY STRATEGY WITH A CLEAR AND STRUCTURED WORKPLAN

Gianluca Colombo
Chief Procurement Officer,
Firmenich





PLANTOPIA'S UEBT MEMBERSHIP HELPS US MEASURE AND DEMONSTRATE SOME OF OUR COMMITMENTS TO PEOPLE AND PLANET

Victoria Cushing, KMI Brands,
Plantopia Product Director

The workplan has a focus on gradual improvement towards ethical sourcing and sets priorities, targets and strategies for the next three years.

Once UEBT approves the workplan to ensure it is sufficiently ambitious, the company becomes full member.

For organisations directly involved in sourcing practices, the membership evaluation is focused on practices in the field and is complemented by a field assessment.

While not the same as UEBT verification or certification, membership can pave the way to or be combined with one or more of these UEBT programmes.

Learn more...

Read the [UEBT membership conditions and obligations](#)

Download the [UEBT standard](#) (pdf)

Find more on [UEBT fees](#)



2nd
Biodiversity loss

Loss of biodiversity is people's second most urgent environmental concern after climate change

6,000 people across US, UK, Germany, France, Brazil and China¹

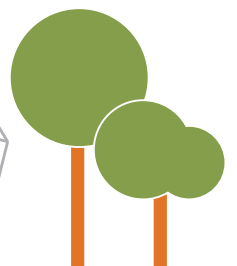
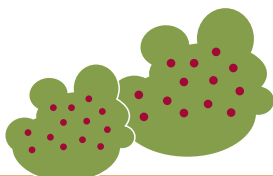


5th
Plastics pollution

3rd
Air pollution

4th
Forest loss

1st
Climate change





COST OF MEMBERSHIP

When applying for membership, a one-time application fee is charged. This application fee is 50% of the annual membership fee, which is based on the turnover of the organisation.

Membership fees are charged annually and are based on annual turnover. Farms and producer associations with turnover of less than €1.9 million are exempt from membership fees.

Fees are calculated differently for local organisations that seek certification and that are directly responsible for cultivation and collection practices.

Membership fees do not cover field-based verification and/or certification, licensing of UEBT labels or claims, or subscriptions for UEBT due diligence tools.

Advantages of being a UEBT member vs non member

Some UEBT tools available for members and non-members are subscription-based (see opposite). Members benefit from preferential rates.

Members also have more labelling opportunities than non-members including the possibility to use UEBT label on-pack and verification claims in B2C communications.

Benefits of membership

- Use of membership logo
- UEBT governance and general assembly
- UEBT annual conference
- Networking and exchange

Due Diligence Tools¹

- ABS due diligence database subscription
- ABS helpdesk subscription
- UEBT responsible sourcing risk database subscription
- UEBT supplier due diligence platform subscription

UEBT Programmes – verification and certification¹

- Ethical sourcing programme – verification
- Ethical sourcing programme – certification
- Herbs and Spices programme – certification
- Regenerative programme (*launching late 2023*)

Labelling²

- On-product label use (depending on type of certification)
- Off-product label use (depending on type of certification)
- On- and off-product UEBT certified text claims

Other services¹

- Advisory services
- Biodiversity Action Plans
- Participation in working groups²

¹ Additional fees apply; ² Additional fees may apply

IMAGES: MAGNOLIA *MAGNOLIA OFFICINALIS* | INDIAN PENNYWORT *CENTELLA ASIATICA* | ALOE VERA, MEXICO *ALOE VERA* | LEARS MACAW *ANODORHYNCHUS LEARI* | CINNAMON WORKING GROUP IN DISCUSSION © VINASAMEX



UEBT
SOURCING[®]
WITH RESPECT

UEBT

De Ruijterkade 6, 1013 AA, Amsterdam, The Netherlands | Telephone: +31 20 22 34567 | Email: info@uebt.org

Representation in Brazil | France | India | Madagascar | Vietnam

Connect with us www.uebt.org | www.linkedin.com/company/uebt

Published May 2023